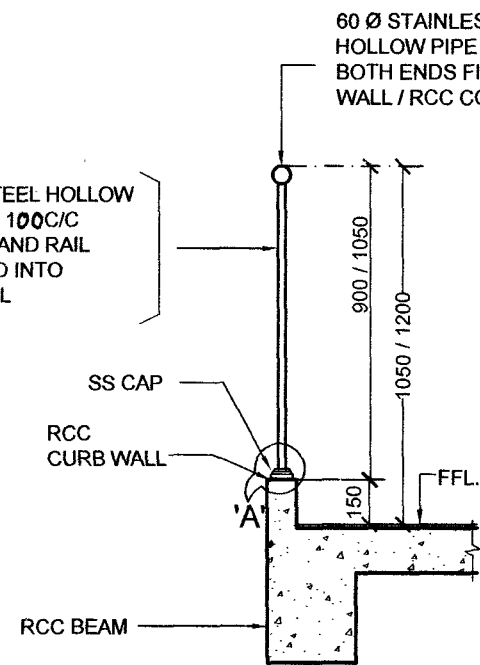


**TYPICAL DETAILS OF
STAINLESS STEEL RAILING TYPE - 1 & 2**

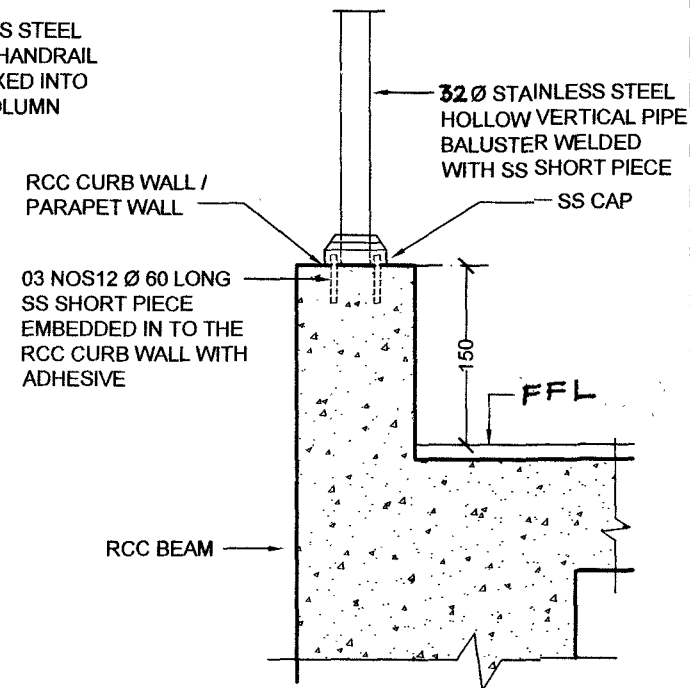
SCALE 1 : 25 TYPE - 1 (1050 MM HIGH FROM FFL.)

TYPE - 2 (1200 MM HIGH FROM FFL.)

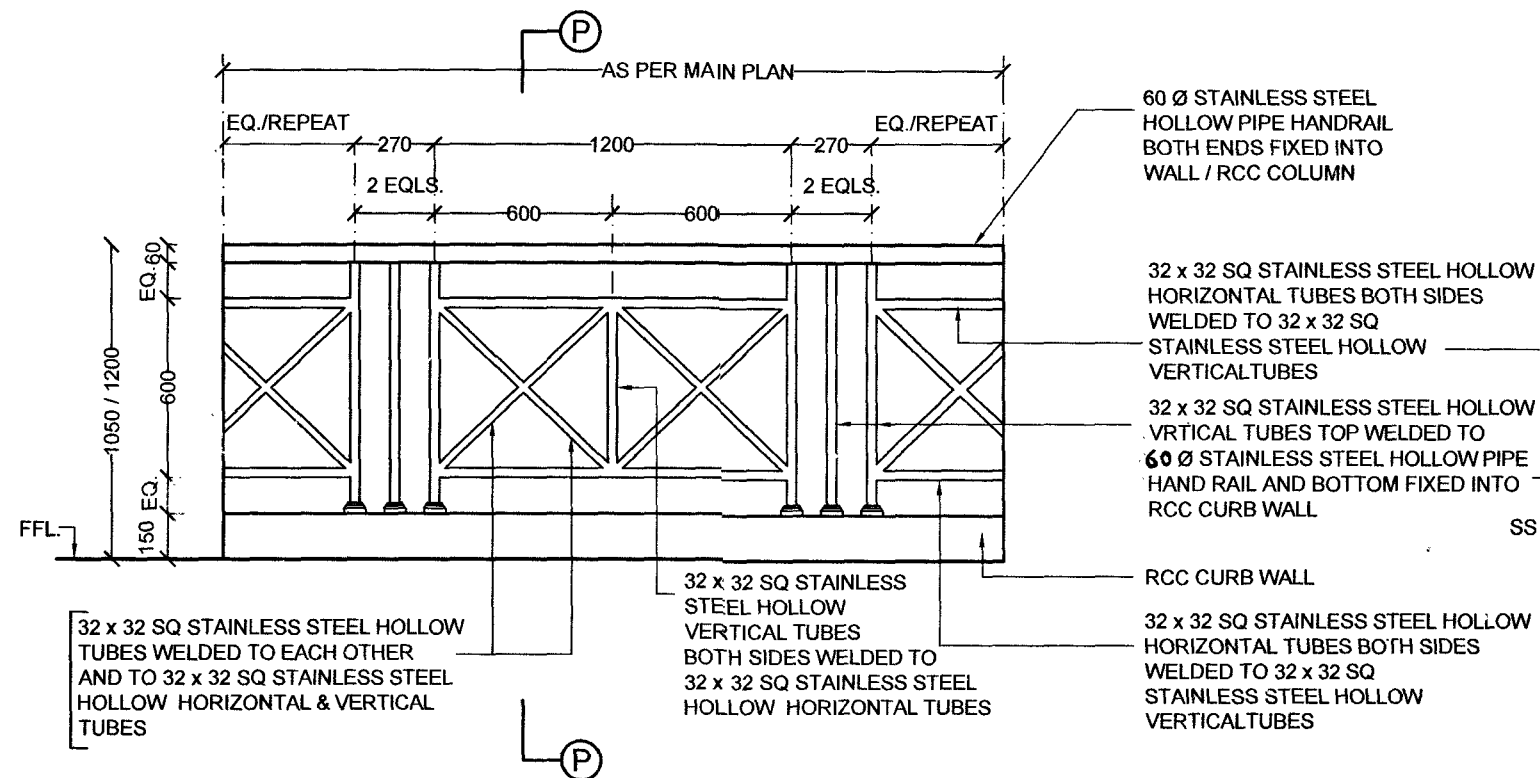


SECTION AT 'Q - Q'

SCALE 1 : 25



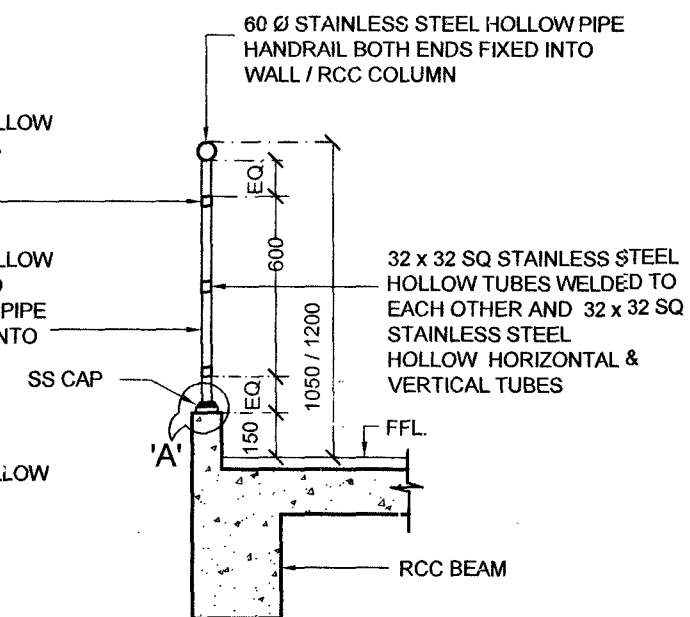
TYPICAL DETAIL AT 'A'



TYPICAL DETAILS OF STAINLESS STEEL RAILING TYPE - 3 & 4

SCALE 1 : 25 TYPE - 3 (1050 MM HIGH FROM FFL.)

TYPE - 4 (1200 MM HIGH FROM FFL.)



SECTION AT 'P - P'

SCALE 1 : 25

SL. NO.	NOTES
1	CONTRACTOR TO CHECK AND VERIFY ALL DIMENSIONS BEFORE EXECUTION OF WORK.
2	FIGURED DIMENSIONS SHALL BE FOLLOWED.
3	ALL DIMENSIONS ARE GIVEN IN MILLIMETERS UNLESS OTHERWISE SPECIFIED.
4	EXECUTIVE AUTHORITY SHALL CHECK THIS DRG. BEFORE TAKING EXECUTION IN HAND.
5	ALL STAINLESS STEEL MEMBERS SHALL BE SMOOTH POLISHED.
6	GAUGE FOR STAINLESS STEEL MEMBERS SHALL BE NOT LESS THAN 1.6 MM TH.
7	ALL STAINLESS STEEL MEMBERS SHALL BE OF SS 304 GRADE.

SL NO	DATE	DESCRIPTION	SIGN.
REVISIONS			
TYPICAL DETAILS OF STAINLESS STEEL (SS) RAILING.			
TYPE - 1 & 2 AND TYPE - 3 & 4			
DATE	20 - 6 - 2022	CHIEF ENGINEER (NAVY)	SHT. NO.
DRN	K. USHA	VISAKHAPATNAM	1/2
TCD		ZONE	
CKD			
SCALE	AS SHOWN	REF. DRG.NO.CEVZ/2022/TD-21	
AAD (ARCH)		JT. DIR. (ARCH)	DIRECTOR (ARCH) FOR CHIEF ENGINEER